

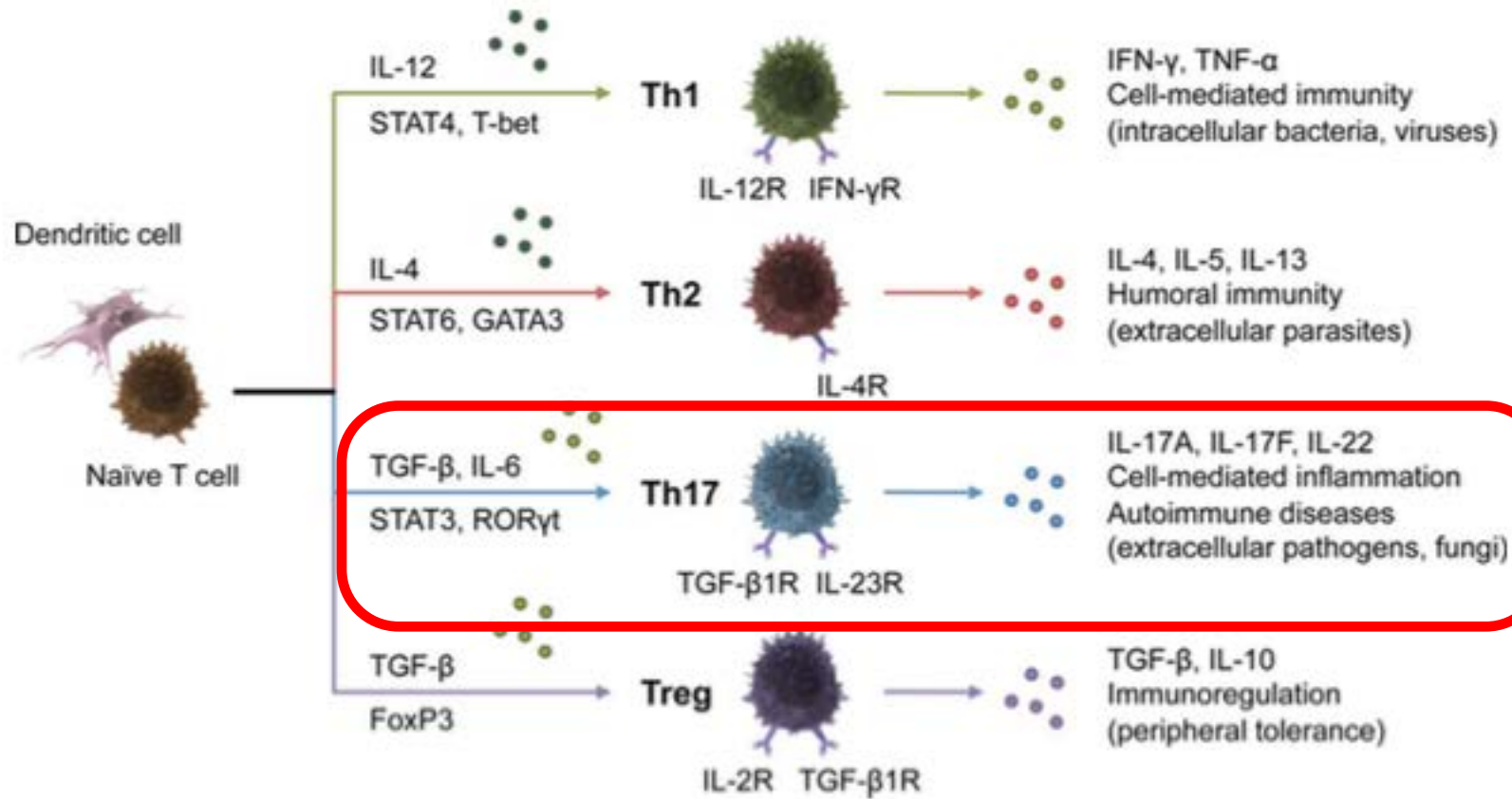
LINFOCITOS Th-17 y PSORIASIS

DIANA V. RONDÓN
RESIDENTE PRIMER AÑO
DERMATOLOGÍA Y CIRUGÍA DERMATOLÓGICA
UNIVERSIDAD DEL VALLE
2017

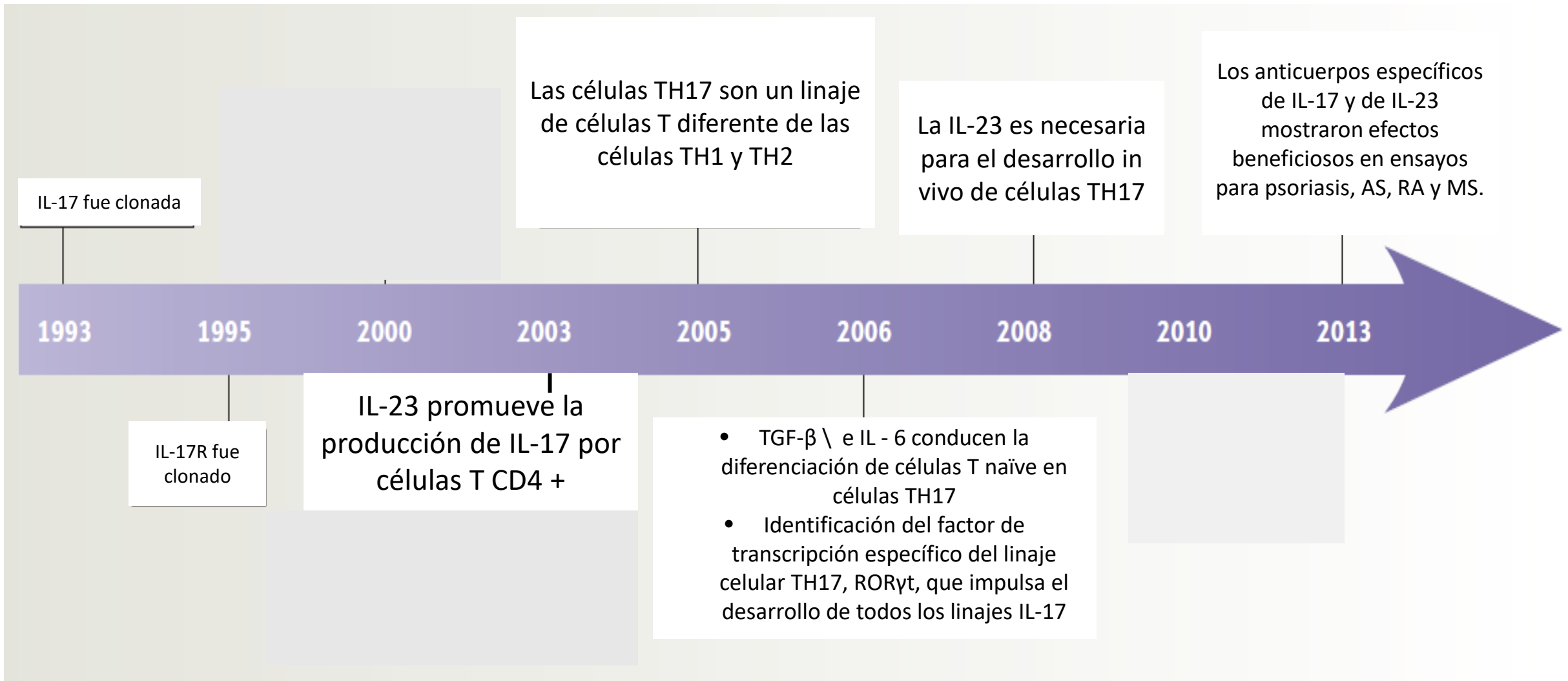
CONTENIDO

- I. DEFINICIÓN
- II. HISTORIA
- III. CÉLULAS QUE SECRETAN IL-17
- IV. MADURACIÓN
- V. ACTIVACIÓN
- VI. DIFERENCIACIÓN
- VII. PLASTICIDAD CELULAR
- VIII. FUNCION EFECTORA
- IX. TH-17 Y PSORIASIS
- X. TERAPIA BIOLÓGICA

DEFINICIÓN

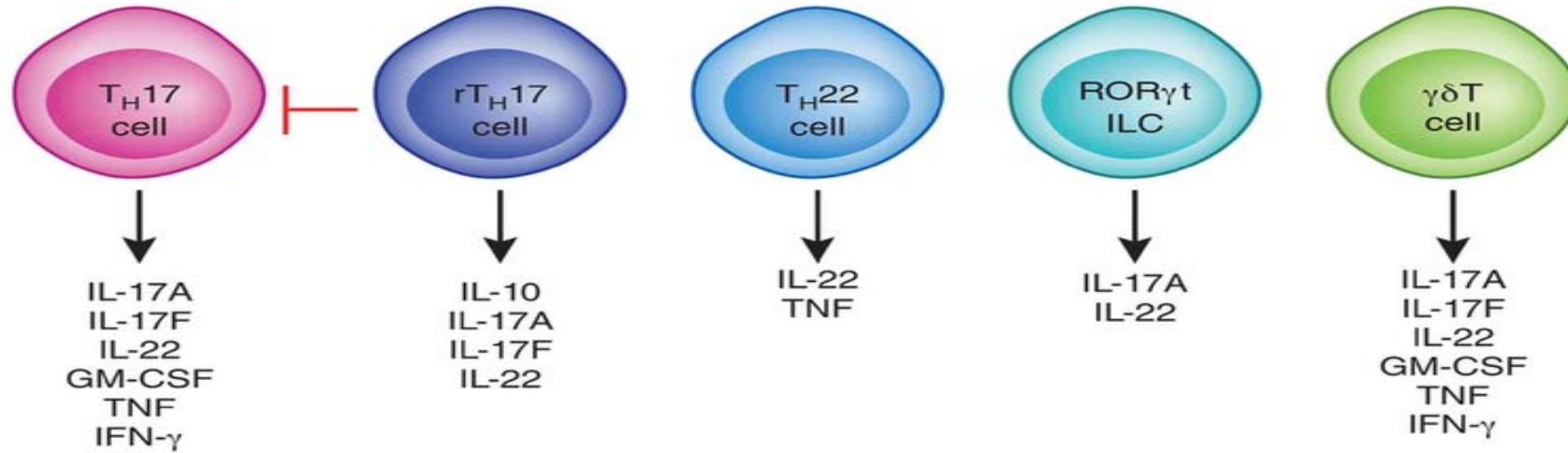


HISTORIA

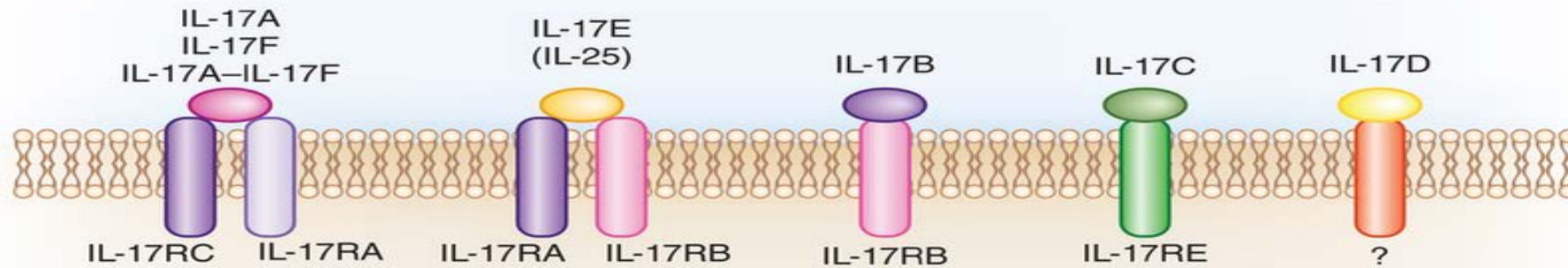


CÉLULAS QUE SECRETAN IL-17

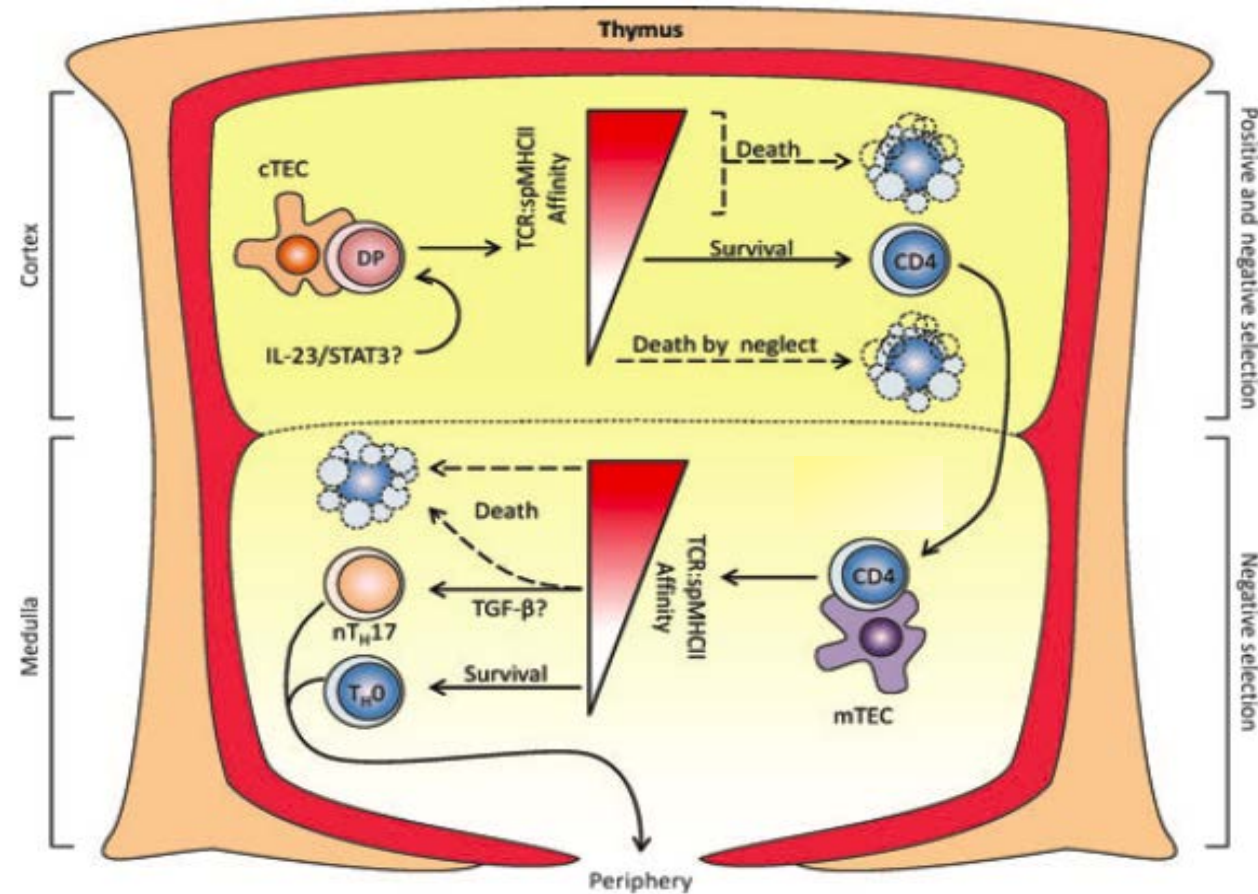
a



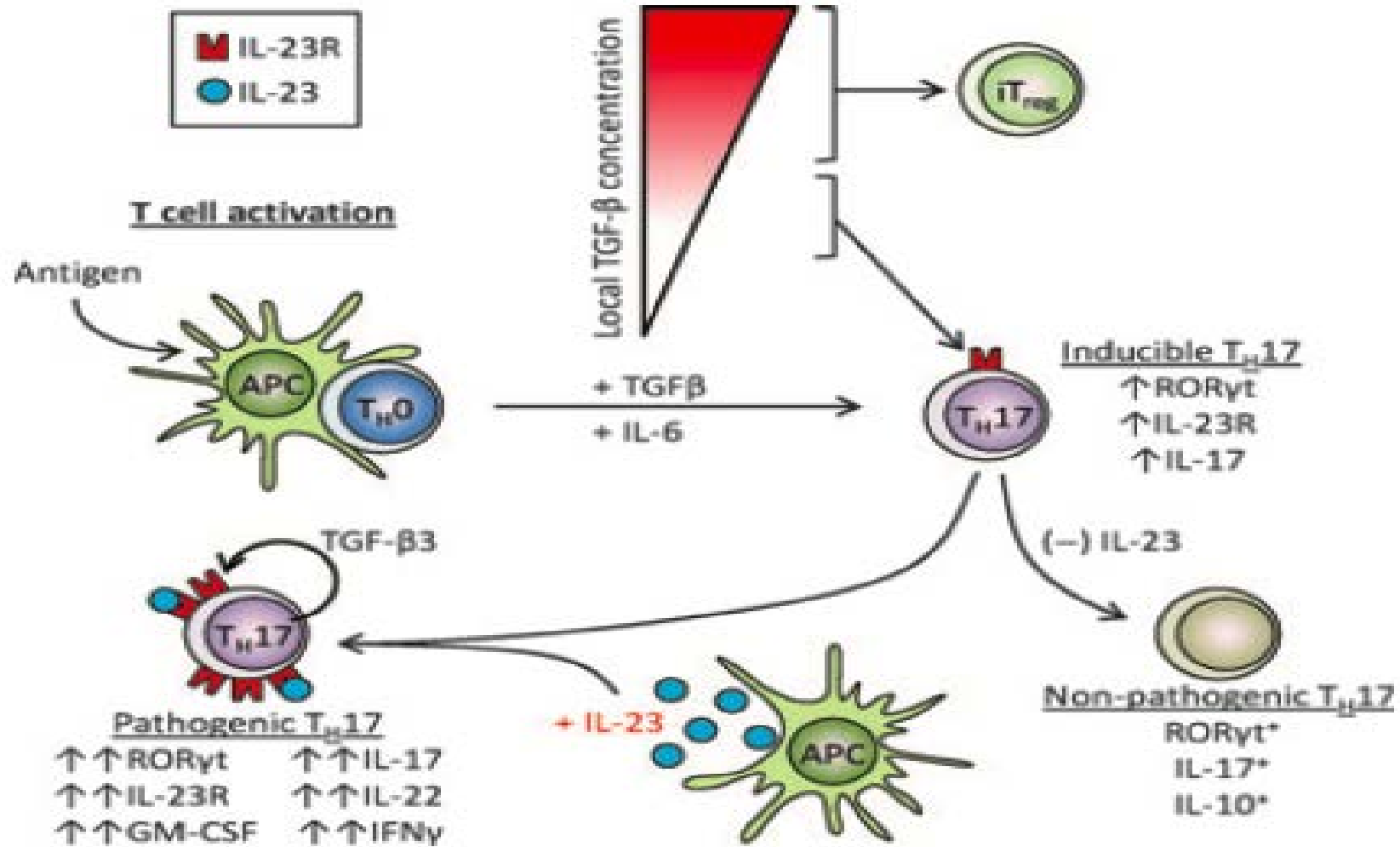
b



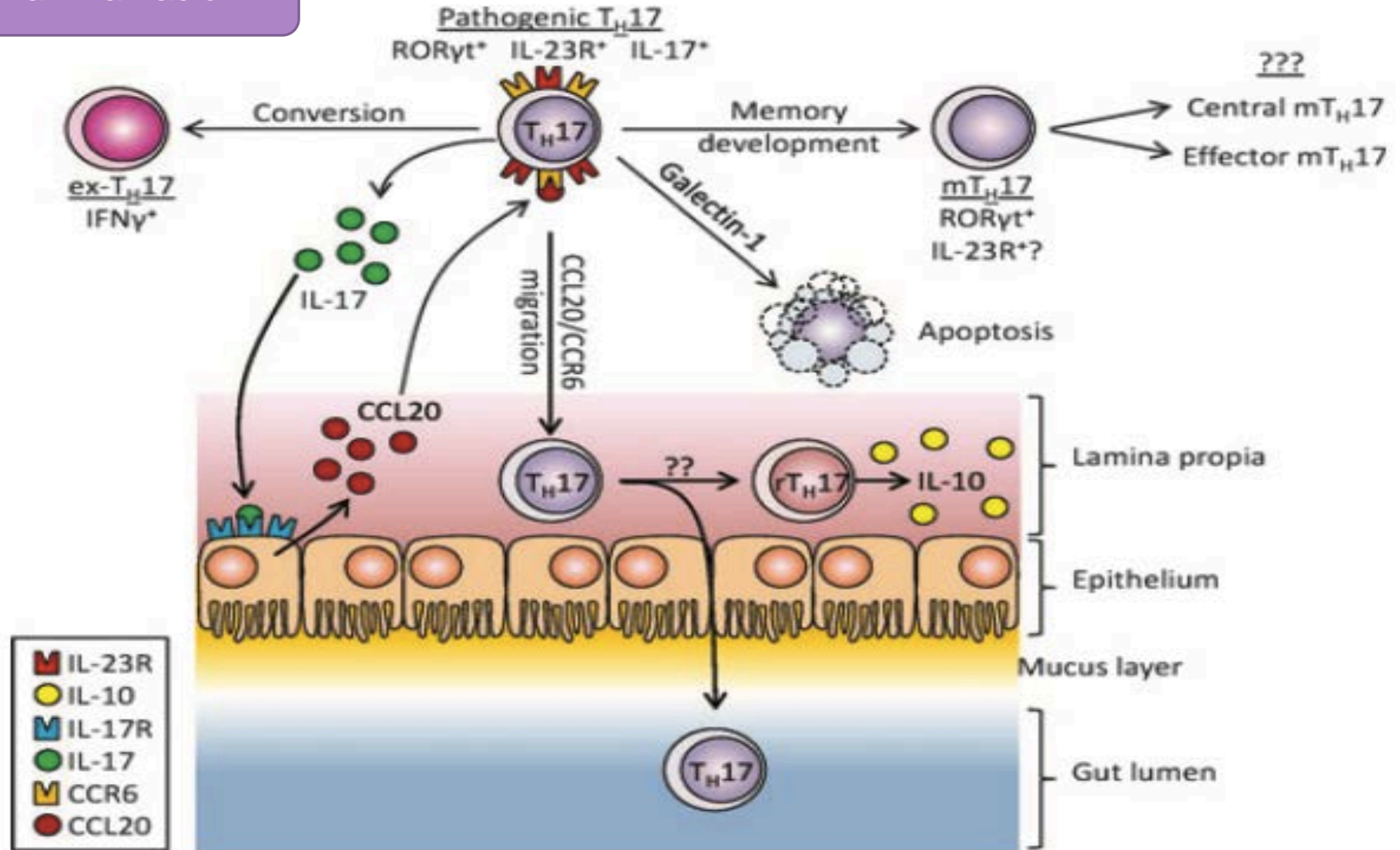
DIFERENCIACIÓN INICIAL



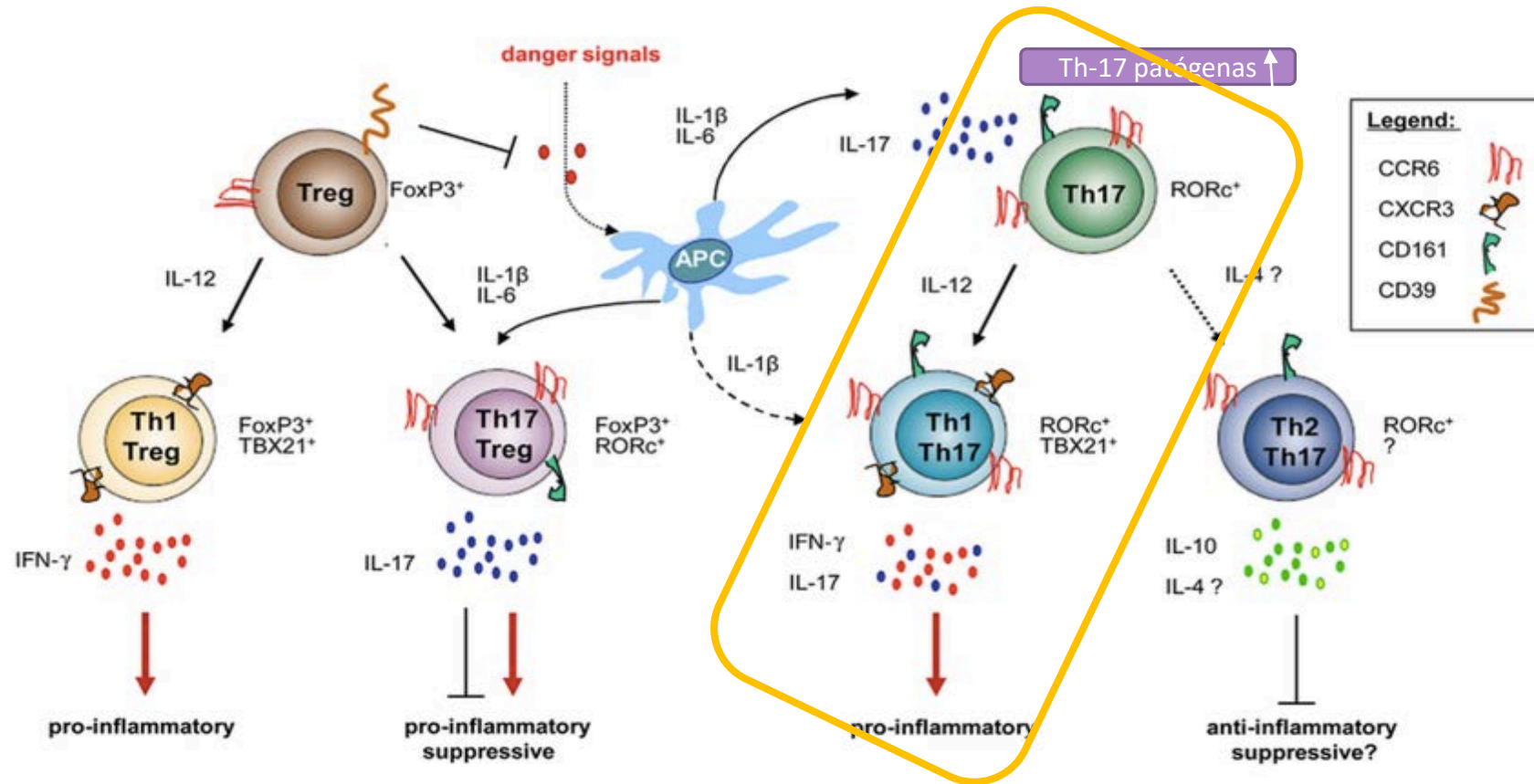
ACTIVACIÓN

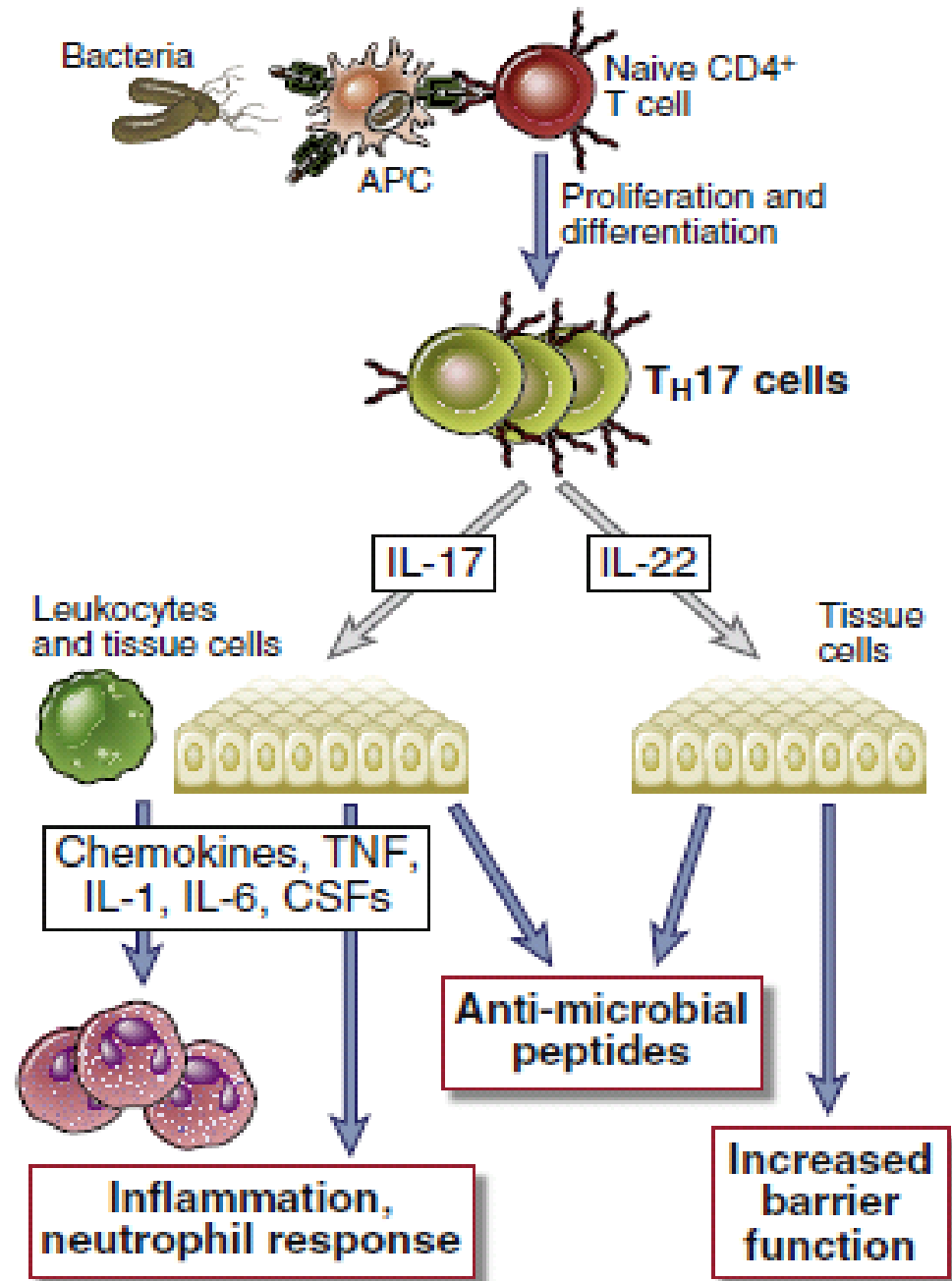


Resolución de la inflamación

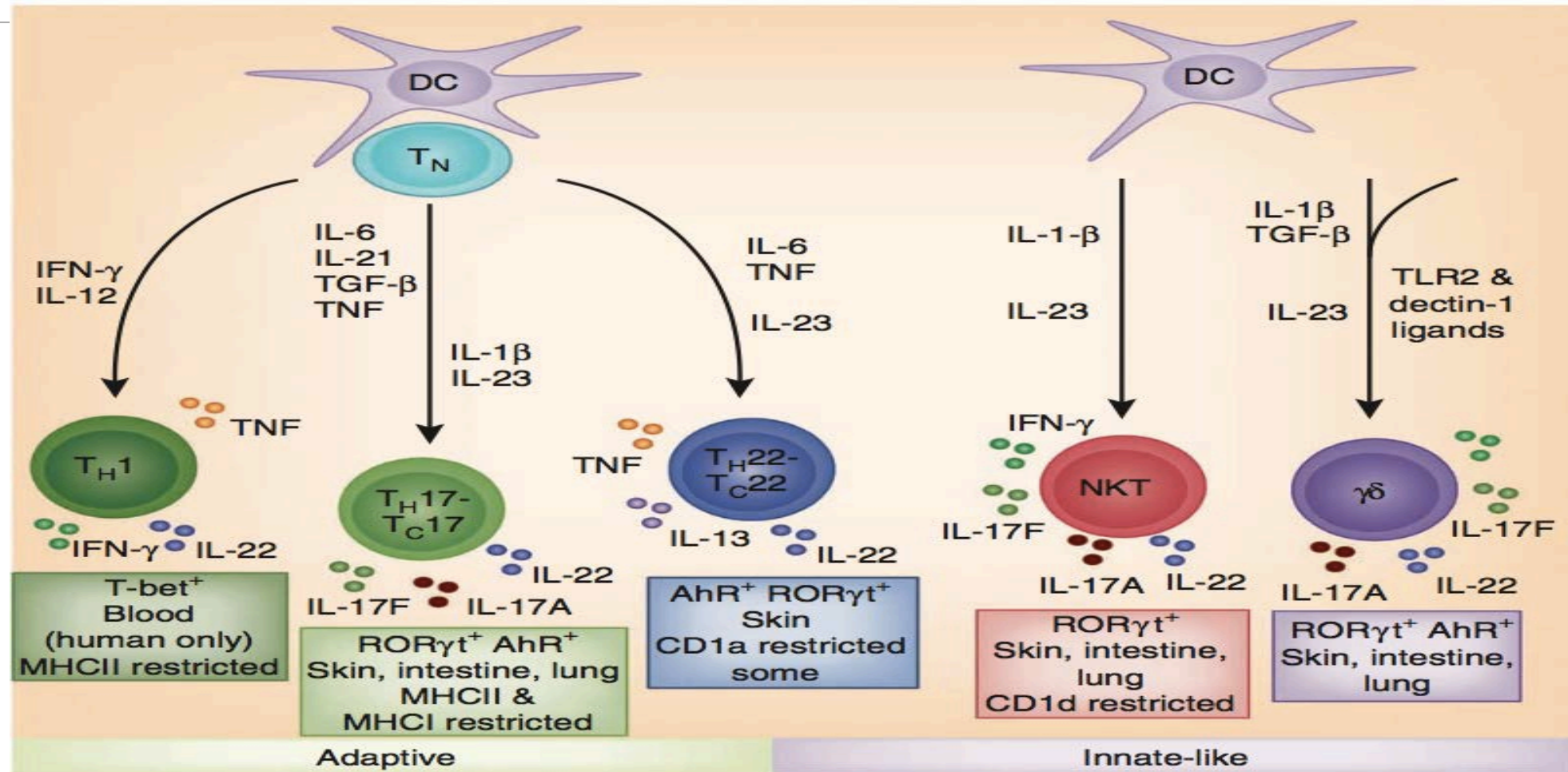


DIFERENCIACIÓN

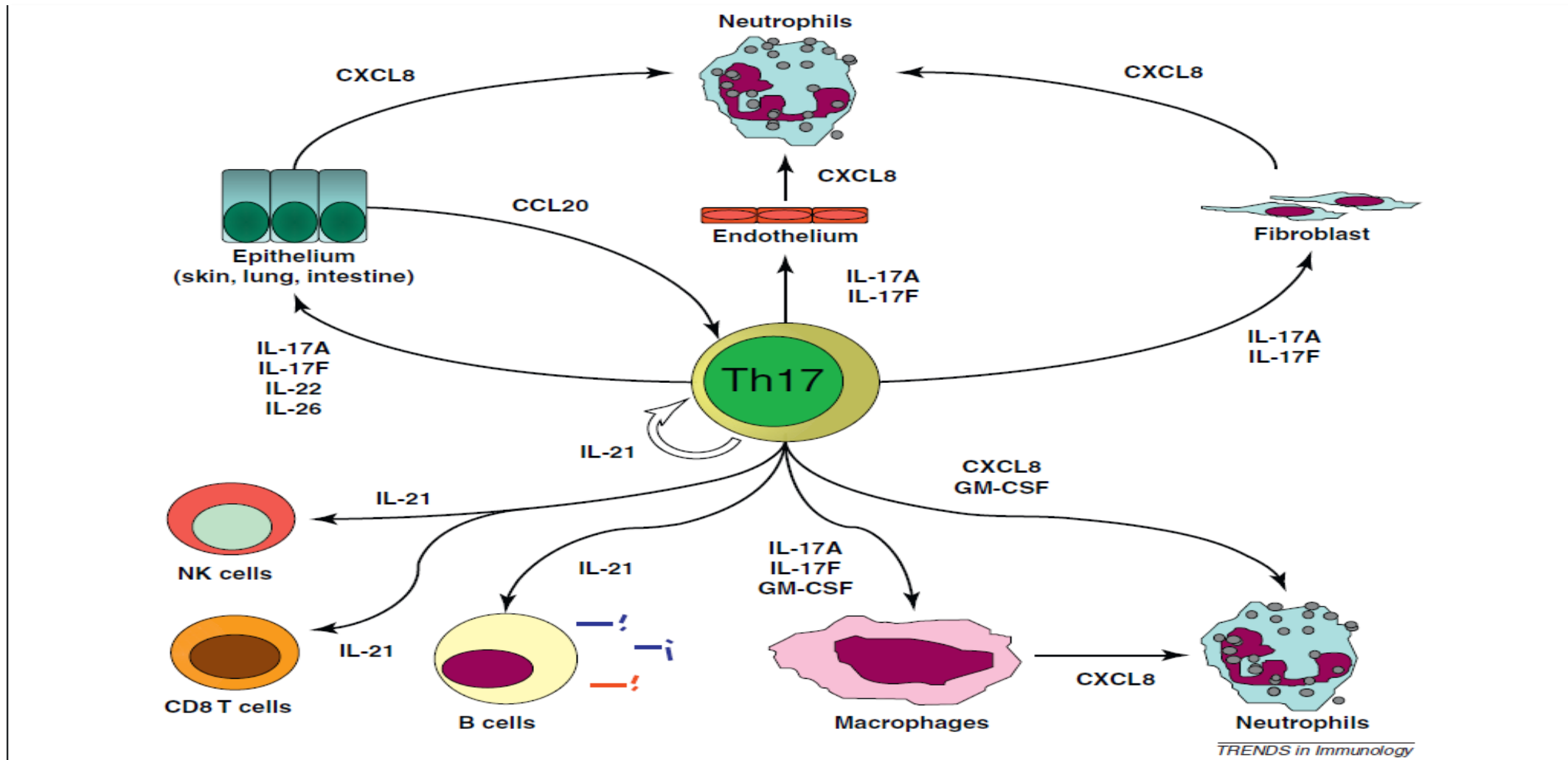




IL-22 / IL-17 EN LA INMUNIDAD DE BARRERA

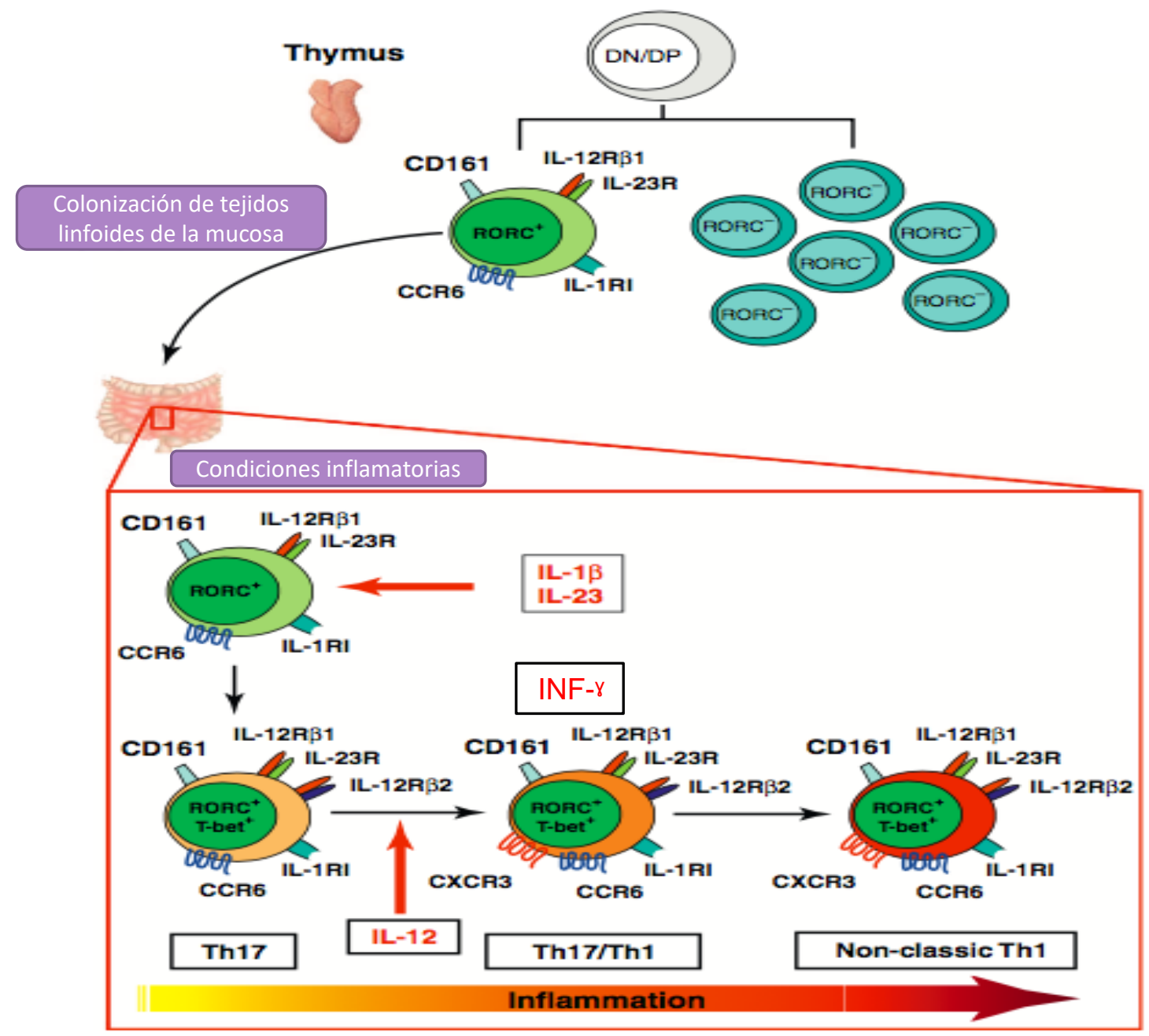


CITOQUINAS SECRETADAS

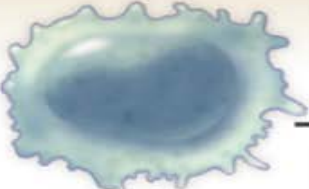






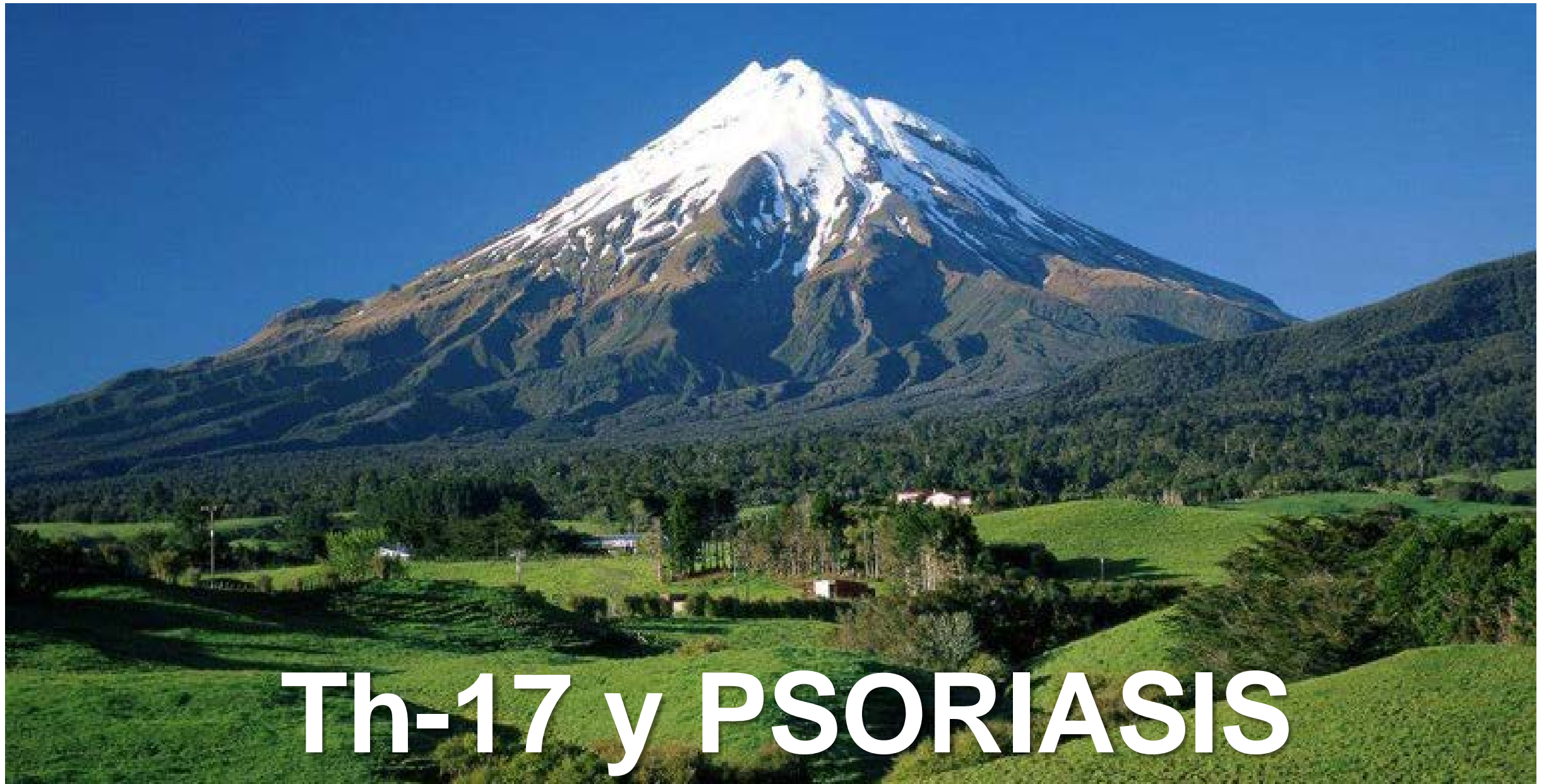


MIGRACIÓN DE LINFOCITOS Th-17 A MUCOSA INTESTINAL



EFECTOS BIOLÓGICOS DE IL-17

Target-Cell Type	Products Released	Biologic Effect	Condition
 Macrophage, dendritic cell	Interleukin-1 TNF Interleukin-6 CRP	Inflammation	Infections Psoriasis Graft rejection
 Endothelial cell	Interleukin-6 Coagulation MMP	Vessel activation	Reperfusion injury Thrombosis Atherosclerosis
 Fibroblast	Interleukin-6 Chemokines Growth factors MMP	Matrix destruction	Multiple sclerosis Crohn's disease
 Osteoblast	RANKL MMP Osteoclastogenesis	Bone erosion	Prosthesis loosening Periodontal disease Rheumatoid arthritis
 Chondrocyte	MMP	Cartilage damage	



Th-17 y PSORIASIS



PSORIASIS

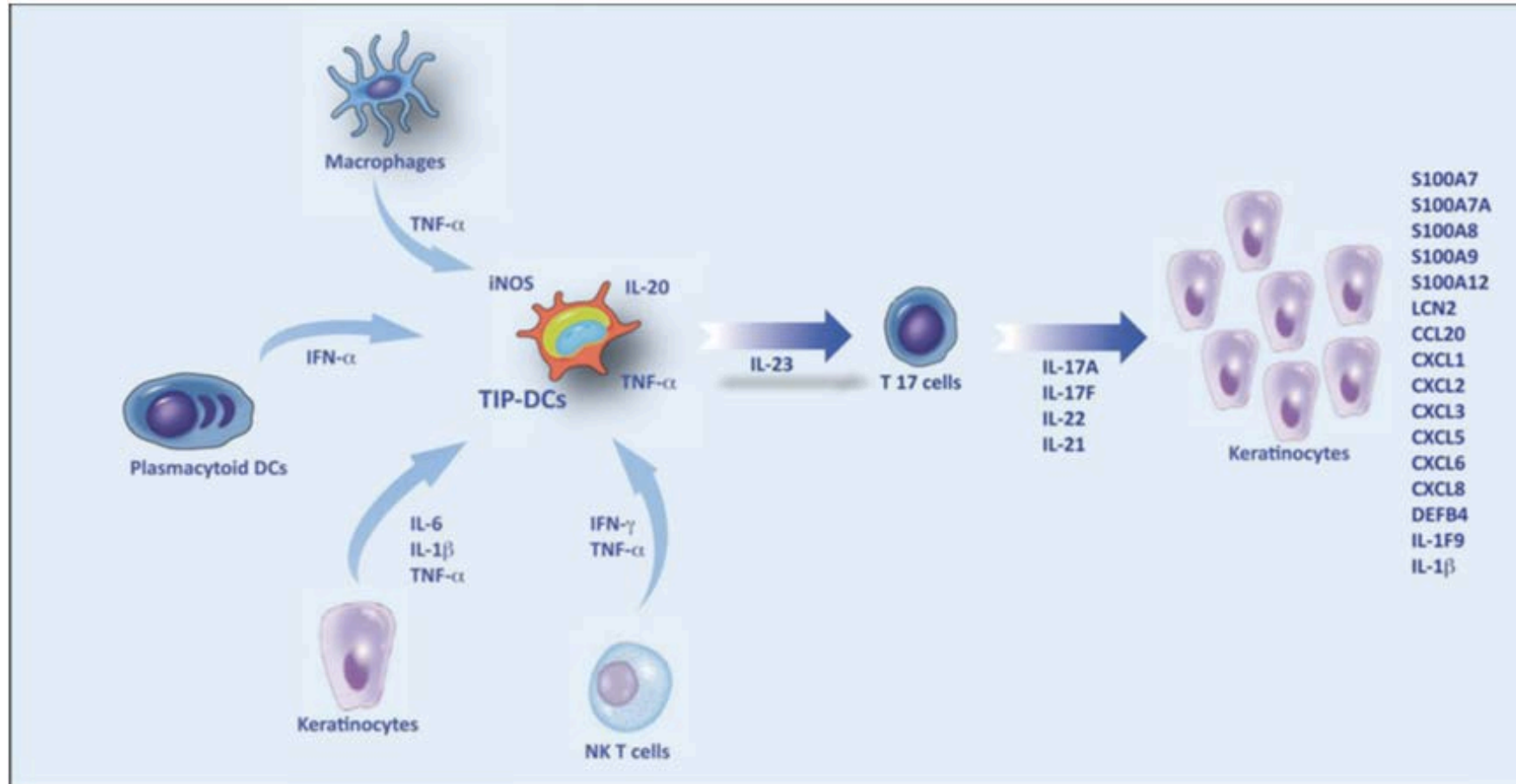
Enfermedad inflamatoria autoinmune

Individuos genéticamente susceptibles

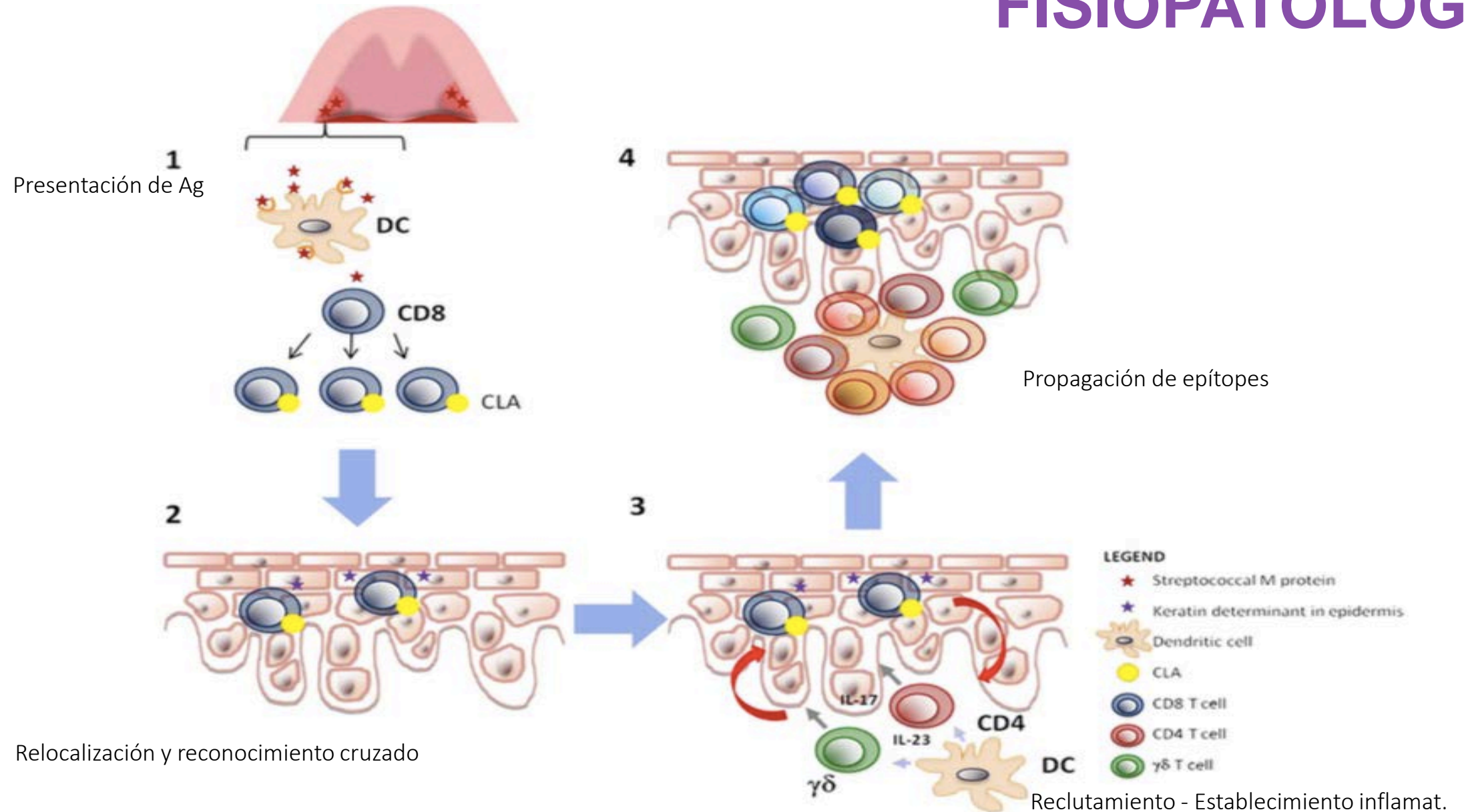
Placas inflamatorias



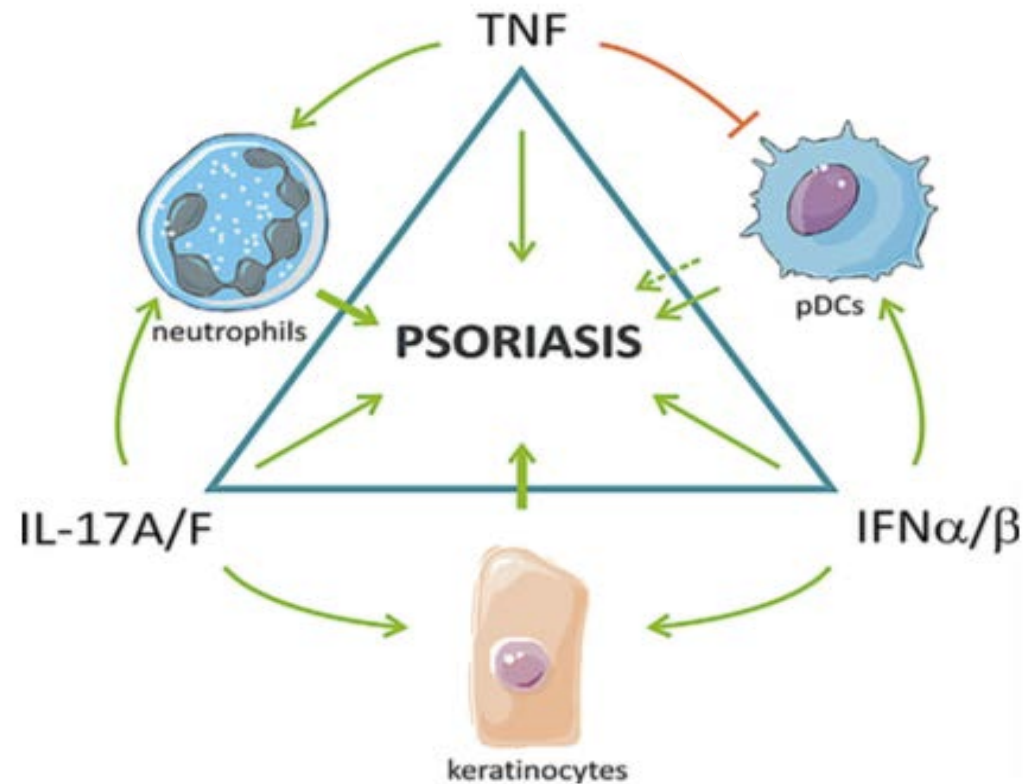
EJE IL-23/Th-17



FISIOPATOLOGIA



TRIÁNGULO INFLAMATORIO





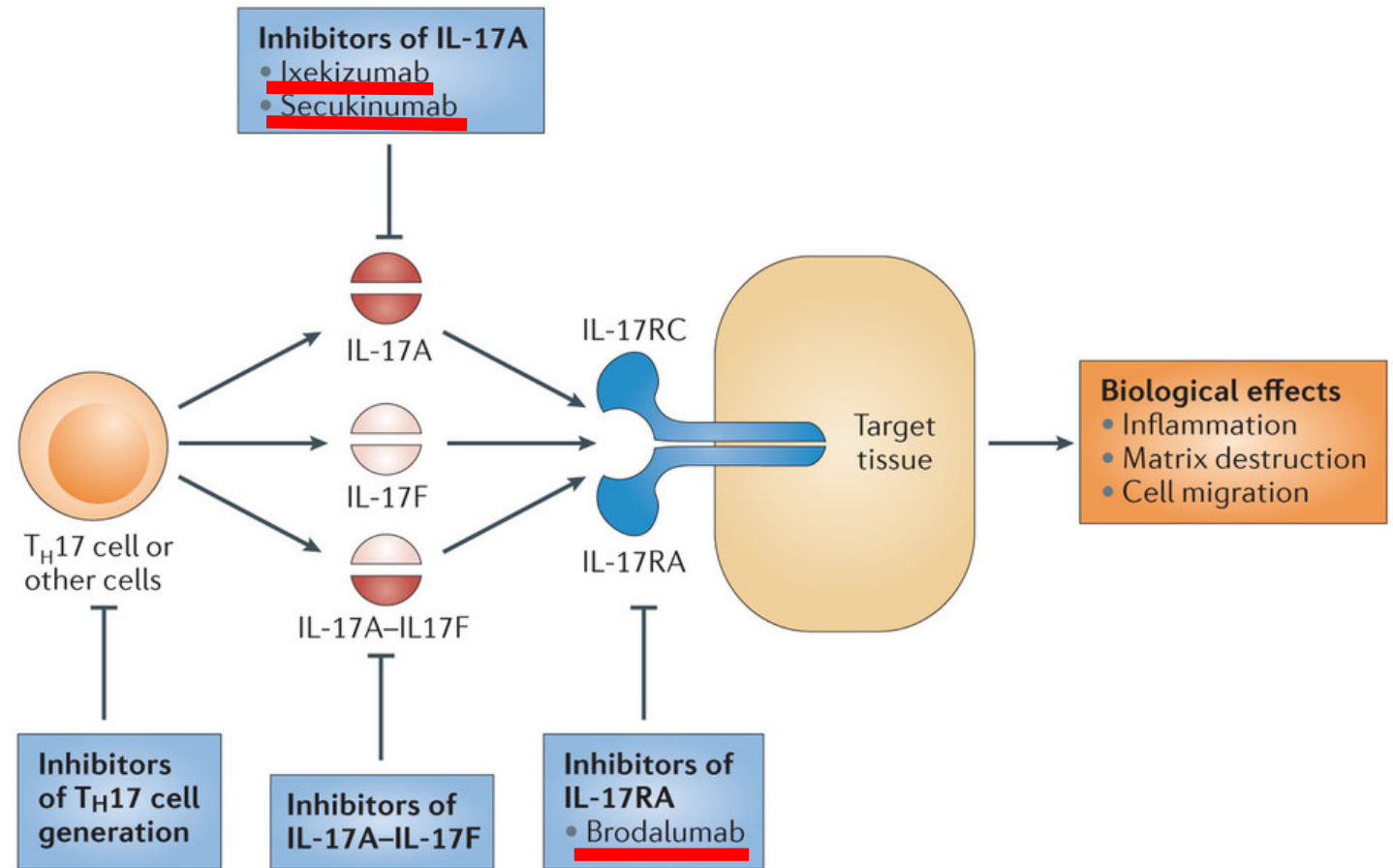
TERAPIA BIOLÓGICA EN PSORIASIS

TERAPIA BIOLÓGICA

✿ SECUKINUMAB

✿ IXEKIZUMAB

✿ BRODALUMAB



Nature Reviews | Drug Discovery

MAS ALLÁ DE LA PSORIASIS...



CONCLUSIONES

- LTCD4+Th17 juega un papel importante en la eliminación de patógenos extracelulares como bacterias y hongos
- LTCD4+ Th17 como célula clave en los procesos autoinmunitarios inflamatorios
- Hay nuevas alternativas en el tratamiento de la psoriasis con la terapia biológica dirigida a IL-17



¡Gracias!